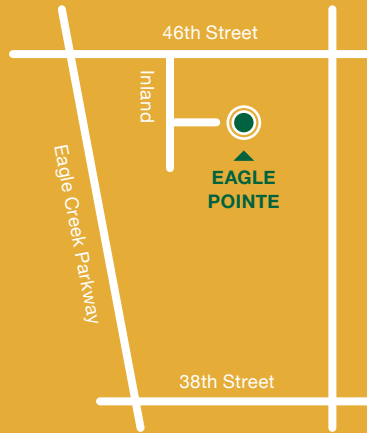


LANDMARK DIRECTIONS

I-465 to West 38th St. Go West on 38th St. to Eagle Creek Parkway. Go North on Eagle Creek Parkway to 46th St. Go East on 46th to Inland and turn right. The entrance to Eagle Pointe is on the left.



COMMUNITY OFFICE HOURS

Sunday	12:00 PM - 5:00 PM
Monday	9:00 AM - 6:00 PM
Tuesday	9:00 AM - 6:00 PM
Wednesday	9:00 AM - 6:00 PM
Thursday	9:00 AM - 6:00 PM
Friday	9:00 AM - 6:00 PM
Saturday	10:00 AM - 5:00 PM

Community Amenities:

- Resident Lounge with Billiards, Big Screen TV and Wifi
- Free Tanning Salon
- Health and Fitness Center with his/her Dry Saunas and Indoor Racquetball Court
- Lighted Tennis Courts
- Fully Furnished Nightly Guest Suite

- Pool and Sundeck with Hot Tub
- Pet Friendly
- On-Site Laundry Center
- Neighborhood Events

Utilities:

- Electric service provided by Indianapolis Power & Light - 317.261.8222
- Phone/Cable/Wireless/Internet Provider: AT&T

Apartment Amenities:

- Washer and Dryer Connection
- Total Electric
- Walk in Closets
- Patio Storage
- Charming Window Seats*
- Double-Sided Fireplaces*
- Lake Views*
- Upgraded Units Available*

**In Select Homes*

Notes:

Eagle Pointe Apartments

317.293.8559 | 6612 Eagle Pointe Drive, Indianapolis, IN 46254

www.liveateaglepointe.com | eaglepointe@multifamilymgt.com

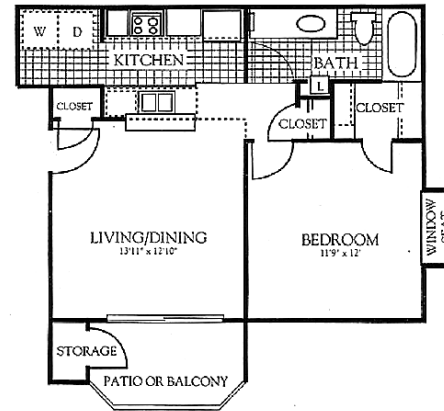
GO

GOLDOLLER
Real Estate Investments

Eagle
P.O.I.N.T.E
APARTMENTS

Friendly. Connected. Relaxed. Natural. Attractive.

From the first moment you step through our door at Eagle Pointe Apartments, you will know you are home. We offer apartment homes that will meet your every need and wish. Come home to natural beauty, complete with two lakes and complemented by beautiful fountains. We guarantee that our collection of lifestyle amenities will not be matched. The charming 1 & 2 bedroom floor plans offer unique features such as, double-sided fireplace, window seats, cathedral ceilings and many more. Conveniently located minutes from: I-465 & I-65, Downtown Indy, Eagle Creek Park, Indianapolis International Airport and popular shopping and eating venues. The only thing we don't have is... YOU! Come meet our professional, caring team today to help you choose your new home.

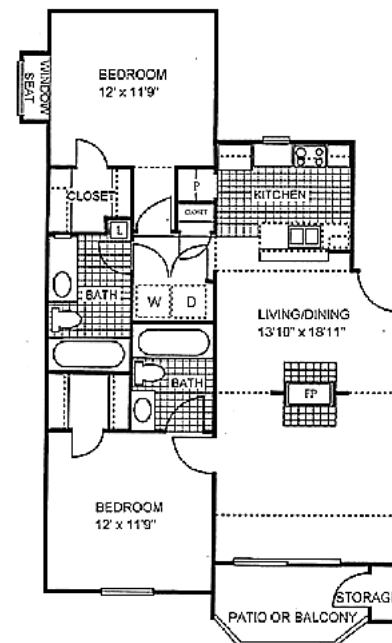
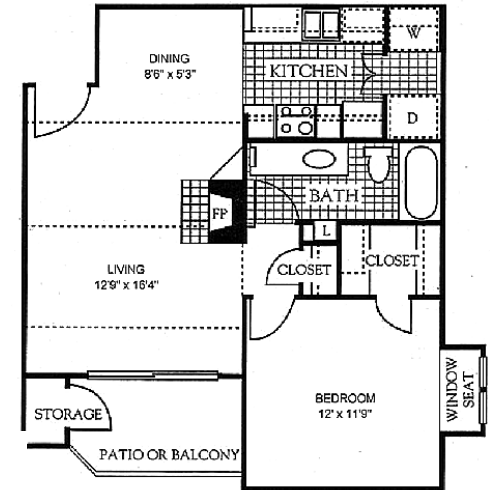


Eagles Nest

1 Bedroom 1 Bath | Sq. Ft. 580

Golden Eagle

1 Bedroom 1 Bath | Sq. Ft. 690



Bald Eagle

2 Bedroom 2 Bath | Sq. Ft. 1010

**Ask about our Preferred Employer and Student Discounts*

**Pricing Subject to Change*

